



User Guide

Introduction4

About this VGo System.....4

Important Safety and Operational Information5

 Attention and Electric Shock Symbols 5

 Safety Information 5

Network Requirements for the VGo.....7

Network and PC Requirements for Remote Users8

Setting up the VGo.....9

 Step 1 – Setting up the hardware 9

 Using the Blue Button Touchpad 10

 Step 2 - Setting up the Wireless Connection 11

 Step 3 - Creating a VGo account and Downloading the VGo PC App 13

 Step 4 – Authenticating your VGo 15

 Enabling VGo to Automatically connect to the next WiFi Access Point while driving
(sometimes referred to as “Roaming”) 16

Launching the VGo PC App17

Using your VGo PC App19

 Establishing your Active Presence with a VGo..... 19

 Diagram of VGo Functions and Controls..... 20

 Muting the Audio and Video..... 21

 Looking Around (without moving)..... 22

 Moving around Remotely - Driving the VGo..... 23

 Taking a Snapshot 24

 Using Auxiliary Camera Lights..... 24

 Toggling the Local Video Window (PIP) ON and OFF 25

 The Controls Button..... 25

 Reducing Microphone Sensitivity in Noisy Environments 25

 Adjusting the VGo’s Volume Remotely..... 26

 “Cliff” Warnings on your Video Window 26

 Disabling Cliff Detection Remotely 26

 Docking the VGo to Re-charge the Battery..... 26

 Making a Call to another VGo PC App User (PC to PC) 27

 Answering a video call from another VGo PC App user or a VGo..... 27

 Adding a Contact to your list 28

Making your VGo talk 28

Changing settings in your VGo PC App29

 General Settings..... 29

 Driving Settings 30

 Audio Settings 31

 Video Settings 32

 Notifications Settings 32

 About tab 33

Operating the VGo locally34

 What the different lights mean 34

 Using the VGo’s Handheld Remote Control..... 35

 The VGo LCD Display and Menus 37

 Contacts 38

 Events..... 38

 Goodies 38

 VGo Settings..... 39

 User Settings 39

 Advanced Settings..... 40

 System Information 40

 Version Information..... 41

 Network Settings..... 42

 Muting your audio and video on your VGo 43

 Admitting Visitors Manually..... 44

 Using your VGo to call out 44

Re-charging the battery.....45

Charge Dock placement.....45

Getting VGo Serviced46

Appendix 1 – Configuring EAP-TLS Authentication for WiFi connectivity47

Introduction

Introducing VGo and the power of “active presence”. VGo gives you the ability to not only **be** in a remote location but also to **move around** in that remote location. Manage your staff, check on the patient, inspect the lab, meet the visiting client, diagnose the manufacturing line, visit with co-workers, monitor development progress – from anywhere. With just a broadband internet connection you can move around and interact through VGo as if you were there.

VGo allows you to navigate around a place of business and engage in 2-way video conversations with exceptional audio and video quality. It’s completely interactive and easily used by anyone who has been given permission. VGo is a revolutionary communications experience.

About this VGo System

This VGo is a truly remarkable device – it will change the way you work, interact with others and give you more time. There are a few things to remember:

- It is designed for indoor use
- Although it has sensors to prevent accidents, if you override these sensors and drive it down a set of stairs it will most likely result in serious damage.
- The standard battery will last 6 or more hours before it needs to recharge. The extended life battery will last at least 12 hours.
- Although the VGo will tell you when your WiFi signal is getting low, be careful not to drive out of range, you may lose your connection.
- The VGo PC App is only available for Windows operating systems today, but check for a MAC version in the future.

VGo is a real-time communications device. This means that, unlike a movie that may be streamed to your laptop or mobile phone, the data transmitted (audio, video and driving) must go between the VGo and the remote user reliably and immediately. The VGo’s performance is dependent on the quality of the network connection from the VGo to the remote user. Careful attention must be paid in particular to the WiFi environment to which the VGo connects to transmit and receive audio, video and driving commands. Not all WiFi environments are setup for real-time communications and so the network configuration must be reviewed and modified as appropriate. See the section on **VGo Technical Requirements** for more details.

[NOTE: This equipment has been tested and found to comply with the limits for a Class A digital device, pursuant to Part 15 of the FCC Rules. These limits are designed to provide reasonable protection against harmful interference when the equipment is operated in a commercial environment. This equipment generates, uses and can radiate radio frequency energy and, if not installed and used in accordance with the instructions, may cause harmful interference to radio communications. Operation of this equipment in a residential area is likely to cause harmful interference in which case the user will be required to correct the interference at his own expense.](#)

[NOTE: Changes or modifications not expressly approved by VGo Communications, Inc. for compliance could void the user’s authority to operate the equipment.](#)

Important Safety and Operational Information

Attention and Electric Shock Symbols

The following symbols may appear on VGo products and in this manual.



This symbol indicates attention should be paid to this important user information.



This symbol indicates a risk of electric shock.

Safety Information

Please pay attention to the following safety warnings:



VGo is for indoor, dry location use only.



Do not disassemble. Refer servicing only to qualified and authorized personnel. There are no serviceable parts inside the VGo, other than the battery and fuse.




Use standard North American 120 Volt outlet only.





Do not operate the device in the presence of flammable gases or fumes. Operation of any electrical instrument in such an environment constitutes a definite safety hazard.






Do not use a damaged power cord, plug, or a loose power outlet. To prevent damage or a person tripping, do not leave the power cord exposed on the floor. If the power cord is damaged, call your support center to get it replaced.



 Remove any foreign substances accumulated on the cliff sensor windows or the VGo may be in danger of falling down the stairs. This may cause personal injury and/or critical damage to the product. To prevent risk, clean the sensor window.

 Always keep the power cord of the charger plugged into the outlet. Although the VGo has a self-charging function, if the power cord of the charging dock is unplugged, it cannot charge itself automatically.


 Install the charging dock in a location that can be easily accessed by the VGo. Allow at least 1 foot of space on either side of the charging dock. Be sure there is at least 4 ft of clear space above the charging dock. Be sure there are no highly reflective materials nearby such as floor mirrors or polished metal cabinets that could cause the docking sensors to incorrectly guide the VGo.


  Do not place any metal objects on top of the charge dock as this will result in critical damage to the charger.


 When cleaning the product, do not spray water directly onto the exterior or wipe it with a volatile material such as benzene, thinner or alcohol as this may result in critical damage to the product.

  Before cleaning the charger, make sure to disconnect the power cord.

  Replace faulty battery only with VGo certified parts. Do not use 3rd party batteries.

 VGo is designed to operate in temperature between 5 °C to 40 °C. Operation outside of this range may result in damage to the product.

 Store at a temperatures between -10 ° to +50 °C. Remove batteries during storage.

 VGo complies with FCC Part 15 Class A, and is intended for use in business, industrial and commercial settings.

Network Requirements for the VGo

Active Presence is enabled by a remote user who is connected to a VGo through a network. The users and VGo's "presence" and connectivity are managed by VGoNet, an intelligent cloud-based service that is invisible to users.

VGo requires the following network elements for successful operation:

- Broadband internet access with minimum 768Kbps upload speed
- If inside the firewall, the following outbound firewall ports must be open:
 - Port 5222 (XMPP, TCP)
 - Port 3478 (STUN, UDP)
 - Port 80 (HTTP Non-Proxy, TCP)
 - Port 433 (HTTPS, TCP)
- 802.11 b/g (at 2.4 Ghz) or 802.11 a (at 5.0 Ghz) WiFi network coverage over the area where the VGo will be used
 - WiFi Security can be Open, WEP, WPA, WPA2
 - 802.1x authentication using the EAP-TLS method is supported
 - Other devices, that connect to the same network that VGo is using, which are 802.11b only, should be restricted to the max data rate only (11Mb)
 - This prevents low data rate devices from bringing down the overall data rate of the network
- If the VGo will be setup for WiFi Roaming (where it can automatically move from one access point to another as it travels around a building)
 - Access Point features **Dynamic Transmit Power Control** and **Dynamic Channel Assignment** should be turned **OFF**
 - These settings are not intended for use with a real-time roaming device such as a VGo or wireless phone. These settings could cause unexpected, random low WiFi signals and channel re-negotiations which will severely impact performance.
 - Utilization (traffic) rates must be within network design guidelines for both wireless and wired connectivity
 - An overloaded network will generate packet loss and impact performance
 - Access Points must not have any settings that could exclude VGo from connecting to the AP
 - For example, one AP may permit any device to connect but if the next only permits specific MAC addresses and the VGo is not one of them, then the VGo cannot Roam.
 - All WiFi APs and Controllers must be served by the same DHCP server
 - VGo must have a constant IP address
 - All WiFi APs should be configured with the same security settings (SSID, Authentication, Password, etc)

Network and PC Requirements for Remote Users

The person who will be operating the VGo remotely must have a PC with the following minimum configuration:

- Windows 7, Vista or XP (with service pack 3). Windows 7 is recommended.
- Mouse with a scroll wheel is highly recommended – this is the easiest way to drive and control your view
- 2GB RAM
- 30MB available hard disk space
- Core Duo 1.6 Ghz or greater processor
- Camera, microphone and speakers (integrated or separately attached)
- PC can be hardwired or wireless

- PC cameras with a “face finding” feature in its software is recommended. This helps fill the VGo’s screen with the user’s face and less of the surrounding background.

- For users that will be operating VGo’s in a noisy environment, a headset is recommended. The headset will reduce background noise heard by people who are with the VGo and also enable the remote user to better hear sounds picked up by the remote VGo without having to raise their PC speaker volume excessively.

- For users that will be operating VGo’s in an environment with other individuals who are working nearby, a headset is recommended so that others are not disrupted.

The remote user’s PC must have the following network requirements for successful operation:

- Broadband internet access with minimum 768Kbps upload speed
- If inside the firewall, the following outbound firewall ports must be open:
 - Port 5222 (XMPP, TCP)
 - Port 3478 (STUN, UDP)
 - Port 80 (HTTP Non-Proxy, TCP)

Setting up the VGo

Setting up a VGo for the first time will take about 15 minutes. If you are not already a registered user on vgo.com, it will take an additional 5 minutes to setup your account and download your VGo PC App software onto your PC.

There are 4 steps in the setup process:

1. Setting up the hardware (5 minutes)
2. Setting up the wireless connection (5 minutes)
3. Creating a VGo account and downloading the VGo PC App (5 minutes if not a current user)
4. Authenticating the VGo with the VGoNet network (5 minutes)



Before you begin – you'll need to know the name of the WiFi network that VGo will use and any associated keys/passphrases/password(s) required for connection to that WiFi network. Depending on the WiFi type, there may be additional information you need – see below in *Step 2 – Setting Up the Wireless Connection* for more details. (If you do not have this information, check with the person responsible for the WiFi networks in your facility). VGo cannot be setup and used if it is not connected to a WiFi network which in turn has access to the internet.

Step 1 – Setting up the hardware

Connecting upper and lower sections

- Open the box and remove the VGo upper section (the section with the LCD screen) and set it aside.
- Remove the VGo lower section (the section with the wheels) and place it on the floor.
- Hold the upper section vertically with the LCD screen at the top.
- Align the upper section stalks with the corresponding sockets in the lower unit – the front of the LCD display on the upper section should be on the same side as the speaker grill on the lower section.
- Open the latches and hold them all the way up.
- Gently but firmly seat the upper section stalks in the lower section sockets and flip the latches down so they are flush with the supporting stalks on both sides of the VGo.

Inserting the battery

- Remove the accessories box from the bottom of the VGo shipping box and ensure that it contains the following items:
 - Charge dock
 - AC adapter and power cord for the charge dock
 - Battery (for the VGo)
 - Handheld remote control (with AAA batteries)
- Remove the VGo's battery compartment cover (on the top of the lower section).
- Separate the Velcro battery strap to make room for the battery. If you are using the larger extended life battery, remove the foam spacer block that is taped in place in the battery compartment.
- With the wires on the top, grip the batter by its sides (not by the wires) and gently lower the battery into VGo's battery compartment beside the foam spacer block.
- Click the connector plug into its socket.
 - If it won't click in place, try turning the plug around 180 degrees as it only fits correctly in one direction.
- Attach and tighten the Velcro strap to hold the battery firmly in place.

Using the Blue Button Touchpad

During the setup process, you will make selections and enter information using the intelligent blue button touchpad below the VGo LCD display.

Each button is active only when it is lit (blue). Buttons are context sensitive and so functions or availability may change depending on what is being displayed on the screen.

Horizontal soft buttons

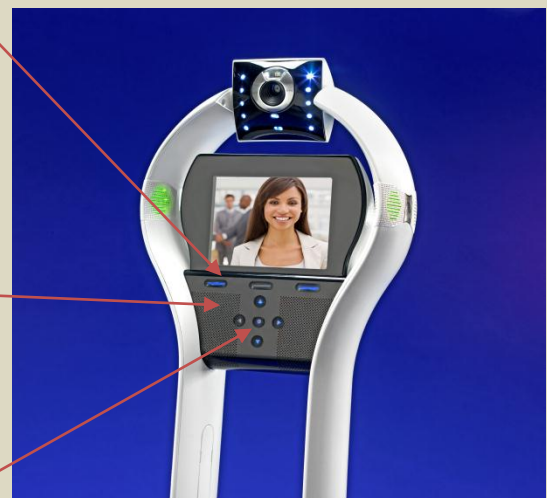
Each of these three buttons performs the function as described by the label immediately above it. For example: **Help** will often appear above the right hand button, indicating that help for that screen can be accessed by a simple touch.

Arrow buttons

In a four way cluster, these are used to navigate menus and also to locally control the remote person's volume when they are visiting.

OK /Accept/Select button

Touch here when you need to select a menu choice.



Step 2 - Setting up the Wireless Connection

- Press the **Power** button found on the rear of the VGo just behind the battery compartment cover.



The battery should have enough power for the VGo to turn on and be setup. If the VGo does not turn on, insert the bayonet end of the AC power cord into the socket located just below the VGo's power button on the rear of the VGo and the other end into a power outlet. The VGo can operate normally once the powercord is connected, so you can continue with the setup. Note that when the powercord is connected directly, the drive system is disabled.

- The VGo will take about a minute to boot up and you'll then see a **Welcome** screen on the display. Select **Next** to configure your WiFi.
- After the VGo scans for available WiFi networks, it will display a list of networks it has detected.
 - If the required network is "hidden" (Non-broadcasted SSID enabled), it will not be displayed in the list. To connect to a network that is not listed, select **Add Hidden** and enter the SSID as supplied by your network administrator and follow the instructions. You'll need to know the Authentication type (**None, WEP, WPA, WPA2, WPA Enterprise and WPA2 Enterprise**) and the Encryption type (**None, WEP, TKIP or AES/CCMP**) as well as the passkey.
 - If the Authentication type is WPA Enterprise or WPA2 Enterprise (these use EAP authentication certificates - 802.1X), go to Appendix I of this document.
- Use the blue arrow keys to highlight your WiFi network and touch the **OK** button.
 - When a network is highlighted, it will also display the Authentication type and Encryption type detected for that network. These settings will be configured automatically. You can change these settings manually later.
- Next enter your WEP key or Passkey using the **arrow** buttons to highlight the character and the center **OK** button to select. Select **Accept** when you are done.
 - If you don't see a screen to enter your key, but instead see a screen titled **Select EAP Method**, then you are on an Enterprise network that requires certificate(s) to be loaded on the VGo. Go to Appendix 1 for further instructions.
- Next choose the **IP Addressing** connection type. Most wireless networks use **DHCP**. If your network administrator requires a **Static IP** address, you'll need the following additional information – enter this information in the next set of screens:
 - **IP Address**
 - **SubNetmask**
 - Default **Gateway**
 - **DNS Nameserver**

- The VGo will connect to the network – this may take a minute or two. A green check mark will appear on the screen and then display a new screen that has an activation key and says “**Please login to vgo.com . . .**”. Leave your VGo at that screen and proceed to *Step 3 – Creating a VGo account and downloading the VGo PC App*.
 - Note: If you get an error message, the problem could be with either the VGo’s connection to the WiFi or the WiFi connection to the internet. Both must be working for the VGo to display the activation key.

Step 3 - Creating a VGo account and Downloading the VGo PC App



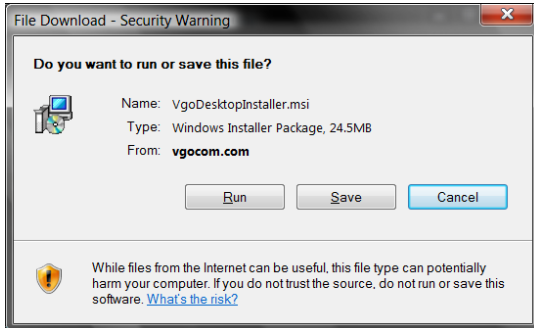
If you already have a VGo account and VGo PC App software, you can skip this step and proceed to *Step 4 – Activating your VGo*.

To activate your VGo (establish the association between you and your new VGo), you'll need a VGo account. To use your VGo you'll also need to download the VGo PC App software from the [vgocom.com](http://www.vgocom.com) website onto your PC or laptop.

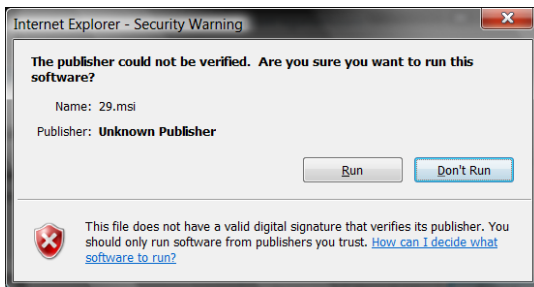
Go to <http://www.vgocom.com/> and click on **New User**

- 1) Enter a Username, your first and last name, email address and the VCode supplied to you by your reseller (call your reseller if you do not have a VCode).
- 2) Click the **Request New Account** button at the bottom of the page.
- 3) Go to your email and open the message titled "Step 1 – VGo Account Setup"
 - If you don't see the email:
 - check your Junk / Spam mail folder
 - wait a few minutes, some email systems may not deliver email immediately
- 4) Click on the link to validate your email address. Another email containing your temporary password will be sent.
- 5) Go back to your email, open the message titled "Step 2 – VGo Account Setup"
- 6) Click on the link that will enable you to log in for the first time. Your web browser will open a new window - the first screen is titled "Reset Password". Click on **LOG IN** at the bottom of the page.

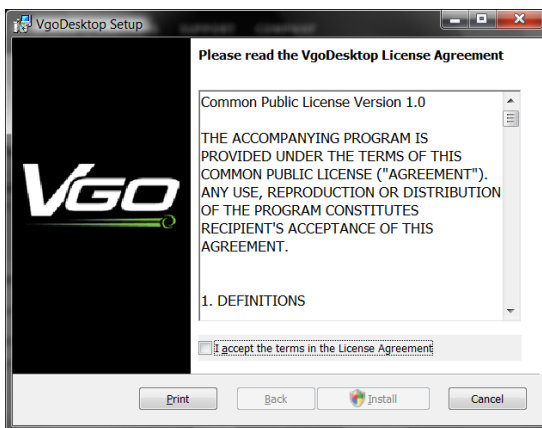
- 7) On the newly displayed **ACCOUNT** page, type a new password into the two fields provided.
- 8) Click **SAVE** at the bottom of the page. Your changes will save - you now have an account and are ready to download the VGo PC App.
- 9) Select **Download Software**.
- 10) Click on **Download Now**. A new page is displayed. Follow the instructions to download and install the software.



When it asks if you want to Run or Save, select **RUN**.




If you get a popup window that says “The publisher could not be verified. . .”, select **RUN**.



During the install, you’ll need to **check the box** for “I accept the terms in the license agreement”, then click on **Install** to continue.

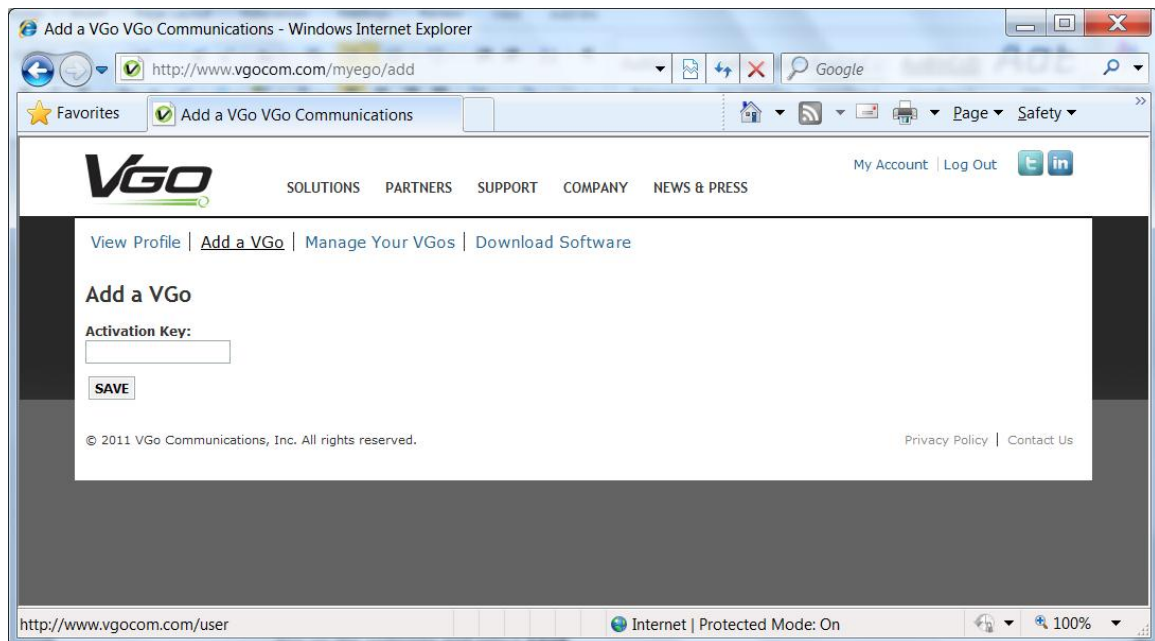
If you get a pop-up that says “An unidentified program wants access to your computer”, click on **ALLOW** to continue.

The download and install are complete when the popup windows close and you have this shortcut icon on your desktop. 

If you are setting up a new VGo, keep your web browser open and stay logged in since you’ll need to authenticate the new VGo with the network.

Step 4 – Authenticating your VGo

- If you are not logged into your account on vgo.com, log in now.
- Select **My Account**
- Select **Add a VGo**



- Type the Activation key that is currently displayed on the screen of your VGo, into the box on the webpage and select **SAVE**.
 - Note: If screensaver photos are on the VGo display, touch any blue button to bring up the previous active screen.
- Your browser will automatically take you to the **Manage Your VGo’s** page.
- You will see the new VGo listed as **New VGo for (your name)**.
 - Note: you may have to “Refresh” the page.
- Select **Edit**.

-
- Enter a **Nickname** for this VGo. This is the name that users will see in their contact list. It's best to use a location name that people will recognize. For example: HQ 3rd Floor, or Manufacturing Floor, or Biology lab.
 - Enter a more descriptive name of the **Location** if desired in the location field. For example: 357 Broadway, NY.
 - If you want VGo to send you an email when its battery is low – check the box.
 - Click **Submit** – to save the changes and then **Log Out**.

You're now ready to use your new VGo. At some point you'll need to find a convenient place to put the Charge Dock. See the Section – **Charge Dock Placement**.

Enabling VGo to Automatically connect to the next WiFi Access Point while driving (sometimes referred to as "Roaming")

Your VGo arrives from the factory set to always stay connected to the same WiFi access point. This prevents your VGo from trying to scan for new access points that may not exist, but of course limits the driving range of the VGo to within the broadcast range of the access point. If your WiFi network is comprised of multiple access points then you'll want to have VGo automatically sense when the network is getting weak and then switch to the next access point as you are driving from one place to another.

In the wireless world this feature is called Roaming (no - your VGo will not roam about on its own, VGo only moves when you drive it).

To turn Roaming On

- First, check with your IT manager to find out what frequency is being used for the WiFi specific network that VGo is connected to. The choices are:
 - 2.4 GHz
 - 5.0 Ghz
 - Both
- From the **Main Menu**, move the highlight using the **blue left and right arrow keys** to **Settings** and touch the center **OK** button.
- Highlight **Network Settings** and touch **OK**.
- Highlight **WiFi Roaming and Scanning** and touch **OK**.
- Highlight **Roaming**. If it says **Off**, then touch **OK** to toggle Roaming to **ON**.
- Highlight **Scan Frequency** and touch **OK** to toggle to the correct setting
 -

With Roaming **ON**, when the VGo determines that it needs to switch to the next WiFi access point, it will automatically stop moving, you will see the message "Searching for Network, Please Wait" while it scans for an access point with a stronger signal and then switches to that access point. The switch to the next access point will take about 3 seconds at which time your audio, video, and driving is restored.

If you are at the edge of the range of your WiFi network, and no stronger access points are available, VGo will re-connect to its current access point and then scan again after about 20 seconds. If you see VGo “Searching for Network” more than once within about 30 seconds, you should assume that you have reached the outside range of the WiFi network and go back 10 or 15 feet to remain in good WiFi operating range.

If you continue to move further out of range, the message “**Your WiFi Signal is Low**” will be displayed and you should not drive further or you may lose remote control of your VGo.

To turn Roaming Off

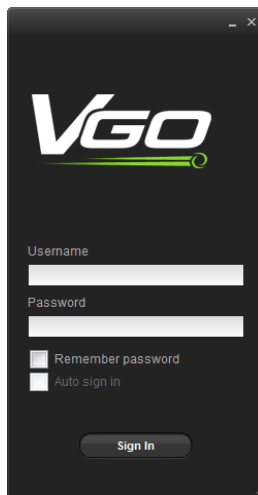
- From the **Main Menu**, move the highlight using the **blue left and right arrow keys** to **Settings** and touch the center **OK** button.
- Highlight **Network Settings** and touch **OK**.
- Highlight **WiFi Roaming and Scanning** and touch **OK**.
- Highlight **Roaming**. If it says **ON**, then touch **OK** to toggle Roaming to **OFF**.

Launching the VGo PC App

On your PC desktop you will see a shortcut icon that looks like this



- 1) Double Click that icon to open your log-in window which looks something like this.

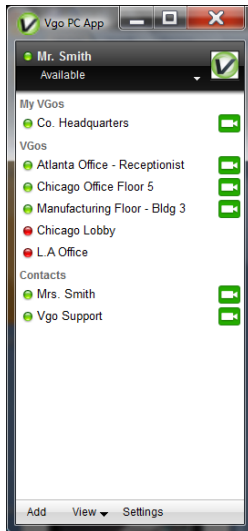


- 2) Enter your username and password (these are the same ones you just created for your account on the VGo website.)

We recommend that you check the two boxes for **REMEMBER PASSWORD** and **AUTO SIGN IN** to make signing in easier going forward.

3) Click **SIGN IN**

The VGo PC App window will then open and look something like this:



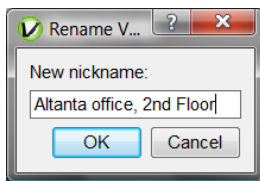
You'll see your user name with a green circle beside it at the top. The VGo that you'll use is listed under "VGos" and you might see other people's names under "Contacts".

The circle indicates "presence" and can be one of three states as indicated by its color:

- Ready
- Busy (only one person can use a single VGo at a time)
- Grey – Offline, this VGo or contact is not logged in and so is not available.

If a VGo, most likely, it is powered off or is not connected to the network.

You can rename a contact or a VGo to something other than the assigned username. Using your mouse pointer, right-click the VGo whose name you wish to change and select the **Rename** option.





Type in the new VGo (or contact) nickname and select **OK**.



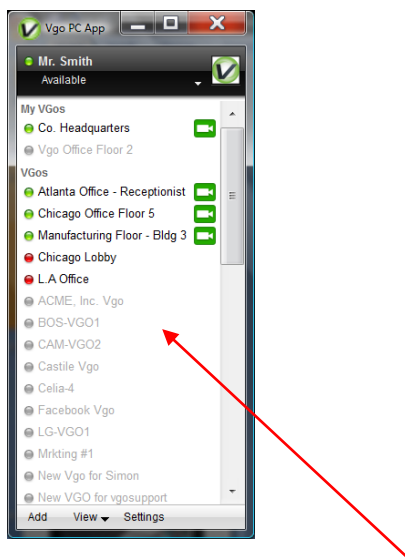
Only designated users who have been granted permission by the manager of each VGo, have access to VGo(s). If a VGo is not in your contact list – you cannot access it. Contact the manager of that VGo if you want access.

NOTE: You can close the VGo PC APP window at any time and the application will remain running in the background – your status remains "available" and you will be notified if another user places a desktop video call to you or sends you an instant message.

- To reopen, so you can connect to a VGo or a Contact – double click on the  in your task tray on the bottom right of your PC screen.
- To logout completely (others will see you as “offline”) - right click on the  and select **EXIT** or if the VGo PC App is displayed on your screen – click **Available** (presence status) just under your username and select **EXIT**.

Using your VGo PC App

Establishing your Active Presence with a VGo



Click on the camera icon beside the VGo that is located where you want to visit.



Note that VGo's and contacts may not be displayed if they are not on-line. To view all contacts whether they are available or not, click on **View** and toggle-on **Show Offline Contacts** by clicking on it – a check mark will appear. To display only sites that are on-line, click on **Show Offline Contacts** again, the check mark will disappear, and only online VGo's and contacts are shown.

After you click on the camera icon – the VGo video window will be opened. You will see yourself until you are connected to the remote VGo. You will then see (the view through the VGo's camera) and hear (the sound picked up by the VGo's microphones) as if you were there. Driving mode is enabled. See below on how to drive.

Diagram of VGo Functions and Controls

Name of the VGo to which you are connected

Duration of visit

Sensor Message Area

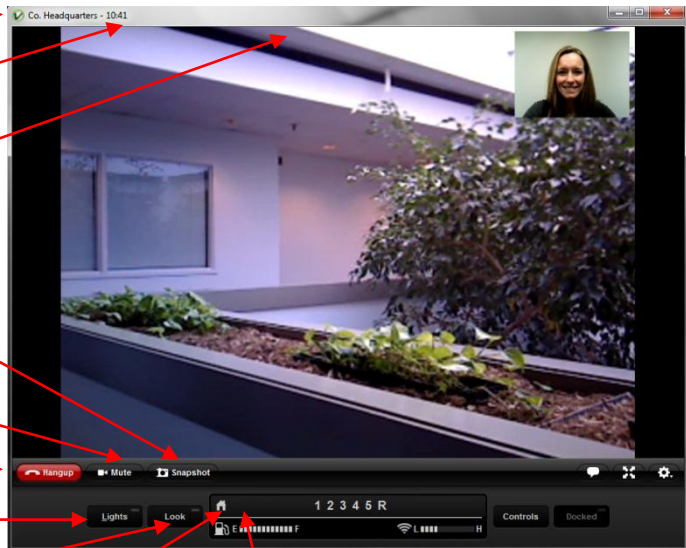
Snapshot Button (see below)

Mute Button (see below)

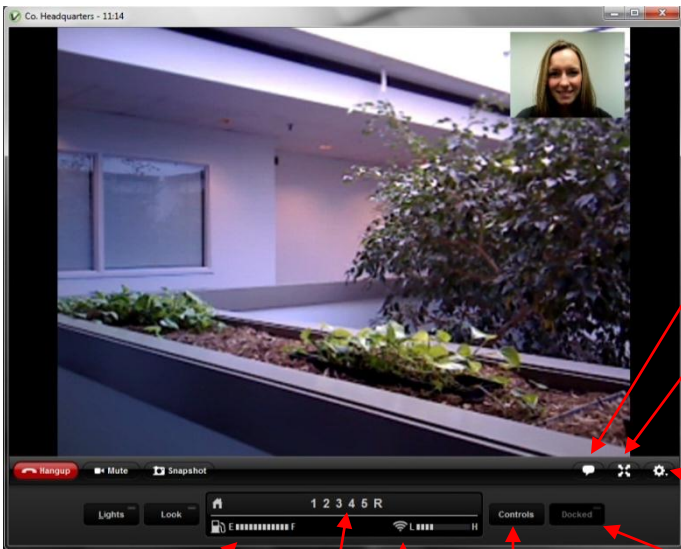
Hangup Button

Lights Button (see below)

Look Button (see below)



Dock icon (house) – indicates the VGo is on the dock



Charging icon (lightning bolt) – indicates the VGo battery is actively charging. It is not displayed if the battery is fully charged. It is also displayed if the powercord is plugged directly into the VGo.

Talking VGo (see below)

Full screen button – click the button again or press Esc to exit full screen mode

Options button (Local Video PIP and diagnostics - see below)

Battery gauge – indicates battery strength. To see more detail, hover your mouse pointer over the gauge

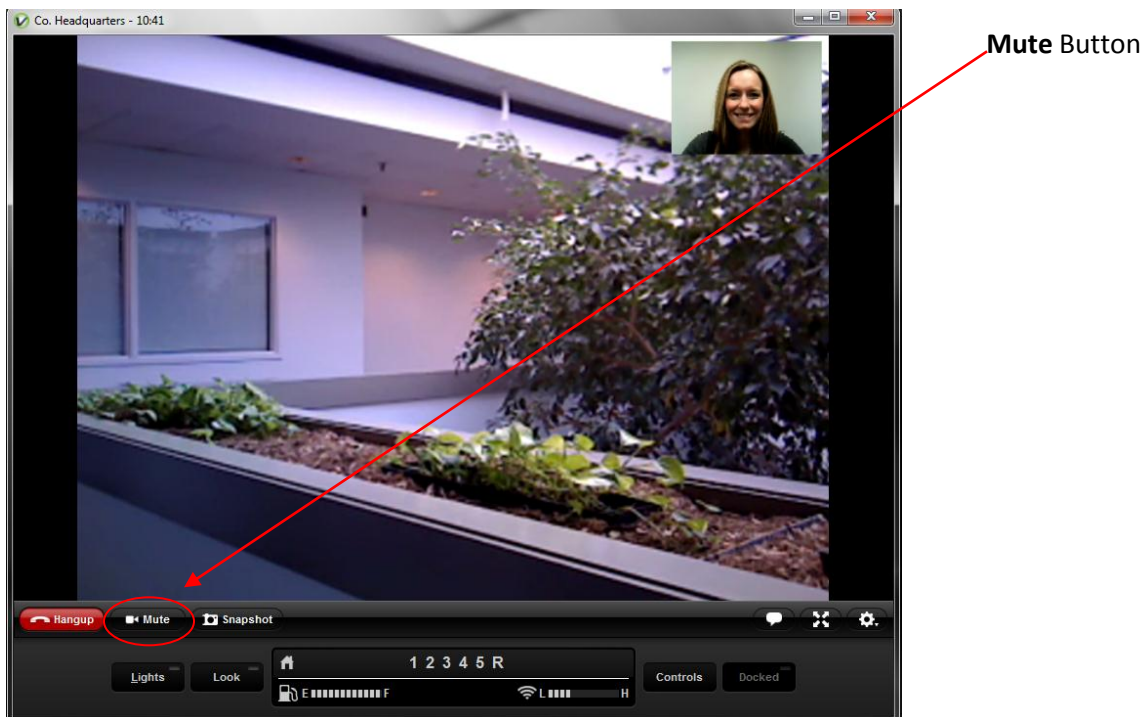
Speed gauge – The associated number will be displayed in orange.
Controls button - (VGo volume, Mics and Cliff sensors - see below)

WiFi Level gauge – a message also warns you when you are driving in an area where the WiFi signal strength is too low
Dock button – (see below)

Muting the Audio and Video

MUTE stops the transmission of your audio and video to VGo while still maintaining the connection to give you temporary privacy. For example, maybe you need to answer a phone call.

- To Mute - Click the **MUTE** button at the bottom left of the video window
 - The button will change to **Muted** and go from white to orange
 - The distant VGo will display a message on its screen notifying people that you have muted
 - The distant VGo will not display your video image or reproduce your voice (people in the presence of the VGo cannot hear or see you)
 - You will still be able to see and hear from the VGo, unless it is also muted
- To Un-Mute - Press the **MUTE** button again
 - The people in the distant location can again hear and see you



Looking Around (without moving)

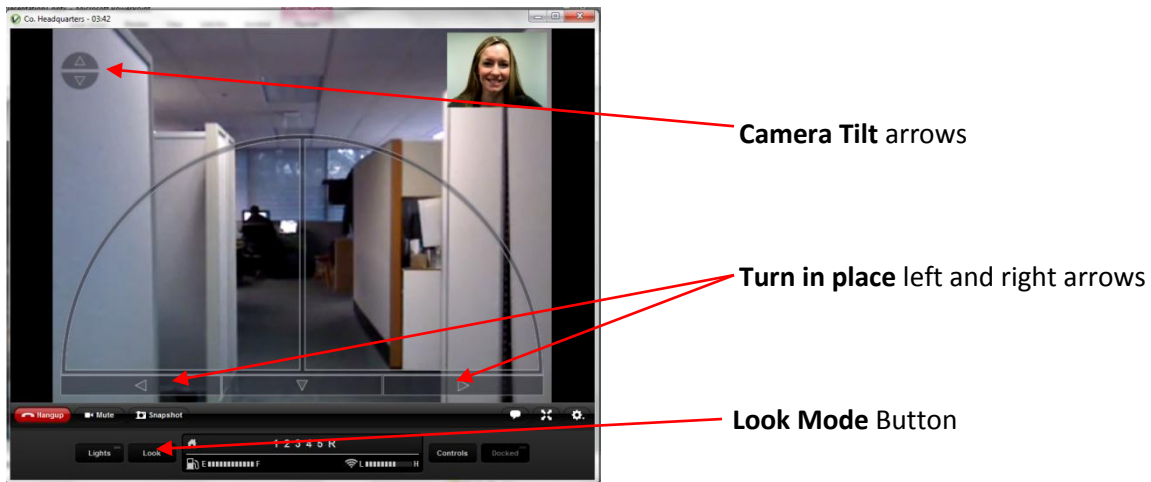
To look up or down

If you are using a mouse with a scroll wheel (recommended), you can roll the scroll wheel to tilt the camera up or down. Also, camera tilt arrow keys (up and down) will automatically appear in the upper left corner of the window when you move your mouse pointer over the video window. Click on either arrow to change your view up or down.

To look left or right

Move your mouse pointer over the video window to illuminate the left and right arrows at the bottom of the window. Click on the left arrow to look left (VGo will rotate in place) or click on the right arrow to look right. You can also use the arrow keys on your PC/laptop keyboard.

- Left arrow – Look left (VGo turns in place to the left)
- Right arrow – Look right (VGo turns in place to the right)



To look all around using the **Look Mode Button**

Look Mode enables you to look around an area using a single control rather than the alternative of combinations of up/down camera controls and left/right drive controls. When you are in Look Mode, Driving mode is turned off.

Click on the **Look** button - a little green light appears inside the button indicating the Look mode is turned on. Move your mouse pointer to the center of the video window. Relative to the center of the video image, click and hold your left mouse button and move your mouse pointer in the direction you want to look. For example, if you want to look down to your left, drag the mouse pointer to the lower left side of the video window. VGo's camera will automatically tilt and the VGo will turn in place to the left. The speed at which VGo "looks around" is relative to the distance from the center of the viewing window.

To turn off **Look Mode** (and turn drive mode back on), click on the **Look** button again.

Moving around Remotely - Driving the VGo

There are two ways to move around in your distant location.

1) Using your mouse or pointing device:

- Move your mouse pointer over the video window to display the “heads up” driving control which looks like a half circle.
- Move your mouse to the bottom center and hold down your mouse button – **the pointer will turn yellow**. The yellow pointer means that the motors are now active and you can move around.
- While holding down the mouse button, slide the pointer in the direction you want to go. The VGo will move in the direction of the arrow. Release the button to stop.
- The VGo’s speed is determined by how far you are from the starting point at the bottom center. Closest to the bottom center, the VGo goes slower. Out by the edge of the circle the VGo goes faster – whether you are going straight or turning.
- The direction is determined by where the pointer is, within the half circle. If the pointer is along the vertical center line, the VGo goes straight. If the pointer is along the horizontal line the VGo will turn left or right in its own footprint. In between the two, the VGo will go forward while turning left or right.



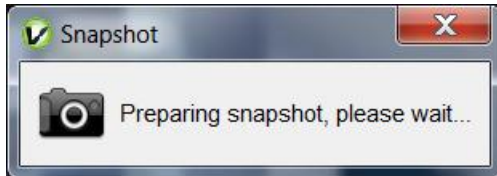
2) Using the arrow keys on your PC keyboard:

- Up arrow – Go forward (VGo moves straight forward)
 - The VGo will accelerate up to its top speed as you continue to hold the key down.
 - Acceleration rate can be changed, go to **Driving Settings**
- Down arrow – Go backward (VGo moves straight backward)
- You can move forward (or backward) and turn simultaneously by pressing the up (or down) arrow and left or right arrow keys at the same time.

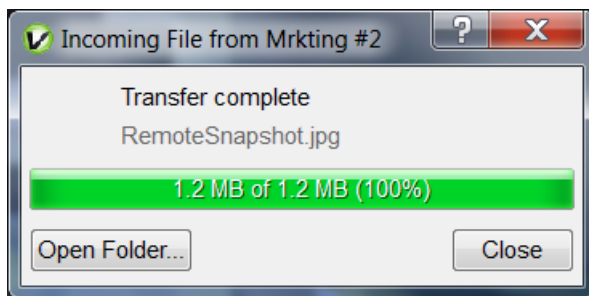
Taking a Snapshot

The remote user can take a still image hi-resolution photo at any time while using VGo.

At the bottom left of the video window, click on the **SnapShot** button to immediately take a snapshot photo using VGo's camera. While the VGo is processing the image you'll see a pop up message such as this:



The snapshot will then be automatically transferred to your PC and stored in a folder. A popup window will inform you once the transfer starts. After transfer completion, you can view the photo immediately. To do so, click on **Open Folder**.



Photos are stored in a folder that is specified within **Settings** (bottom section of the **General** tab). The default folder is **VGo Files and Snapshots** and is located in your documents folder. Snapshots will have a file name of RemoteSnapshotxxx.jpg (where x is a number that increments with each successive snapshot). Snapshot photos remain in the folder until they are moved or deleted by the user.

Using Auxiliary Camera Lights

A set of small LED lights surround the camera on the VGo. These lights are normally off. They can be toggled on and off remotely. In normal lighting conditions, they will not show a noticeable difference in the video picture. In very low light or dark rooms, these lights can provide enough illumination to successfully drive around.

- Click on the **Lights** button to toggle lights on and off (a little green light appears in the button indicating the lights are on).

The lights will turn off automatically when you disconnect from the VGo.

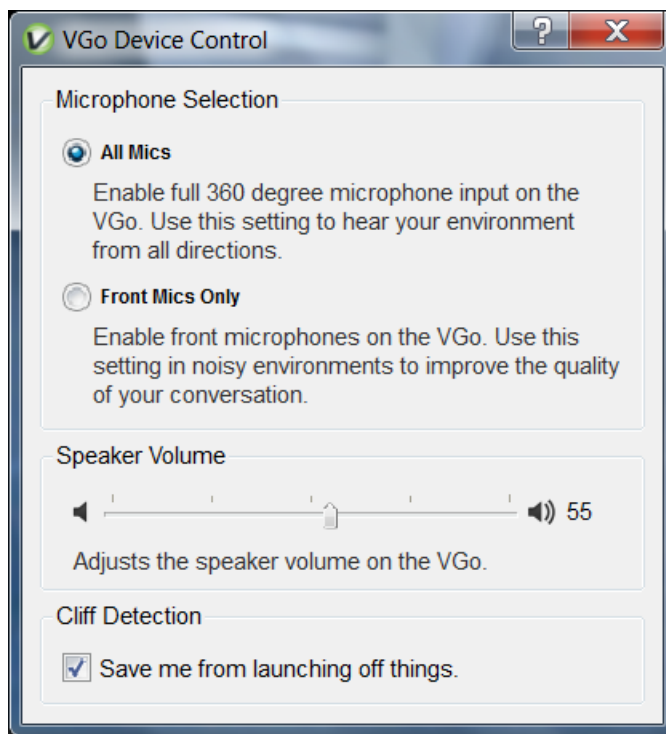
Toggling the Local Video Window (PIP) ON and OFF

When you first connect to VGo, overlaid in the upper right hand corner of the video window is a small video window that displays live video of what the far end is seeing – usually you!

- Click on the **Options** button.
- Click on **Show Local Video** to toggle off and on.

The Controls Button

Click on the **Controls** button to bring up the controls menu.



Reducing Microphone Sensitivity in Noisy Environments

VGo is designed to enable you to hear everything – just as if you were there. However, in noisy environments, you may not want to hear everything. For example, at an event where many people are standing around having separate conversations, VGo will pick all the conversations and may make it difficult for you to focus on hearing just the people you are talking with. To help, you can turn off VGo's rear microphones.

- Click on **the Controls** button. Select the desired Microphone setting.

Adjusting the VGo's Volume Remotely

You can change the VGo's volume remotely, just as if you were there raising or lowering your voice.

- Click on the **Controls** button. Click on the volume slider within the **Speaker Volume** control and slide it up or down to adjust the volume. The volume setting will persist after you disconnect.

"Cliff" Warnings on your Video Window

VGo can automatically detect a drop-off (cliff) and stop a remote user from driving off of it, which of course could damage or topple the VGo. If you see a warning message in your video window while driving the VGo such as "Left Cliff" or "Right Cliff" then the VGo has detected a drop (such as stairs) and will not allow you to drive forward. Use your camera tilt controls to look down at the floor. Click on the down arrow on the video window to back away from the drop off. If you see "Rear Cliff", then you will not be able to move backwards, you can only move forwards.

Disabling Cliff Detection Remotely

There may be occasions though where a floor type will fool the cliff sensor even though a cliff may not be present. This most often can occur when the VGo encounters a black or very dark floor surface. For example, after tilting the camera to look down, you may see that it is just a black extension cord running across your path. To continue to drive forward, you must disable the cliff sensor.

- Click on the **Controls** button. In the **Cliff Detection** control, click on the check mark to uncheck Cliff Detection.

Docking the VGo to Re-charge the Battery

VGo can dock itself to re-charge its battery. The remote user must drive the VGo in front of the dock so that both devices "sense" each other. VGo can charge on any VGo charge dock.

- Drive the VGo in front of a charging dock and turn to face it head-on. The VGo can be from about 1 to 10 feet away (if too close the VGo does not have room to turn itself around)
- When the Dock and the VGo sense each other, the **Dock** button at the bottom right of the video window will change color from grey to white and the docking button becomes "active".

-
- Click on the white **Dock** button. The button label will change to Docking while the VGo is docking itself. The VGo will position itself correctly in front of the dock, turn around so it is not facing a wall, and then back onto the dock. Once the VGo is on the charging dock the label will change to Docked and the Docked icon (house) and Actively Charging icon (lightning bolt) will appear above the battery gauge.

Making a Call to another VGo PC App User (PC to PC)

- Right-click on the name of the person you want to call
- Click how you want to call them.
 - **Send IM** will enable you to send a text instant message
 - Note you can also send/receive instant messages while in a call
 - **Call with Voice** will launch a voice call
 - **Call with Video** will launch a video call

If a video call, a new window will open and you will see your local camera view until the far end has answered the call – you'll then see the video coming from the far end and hear the far end audio.

If a voice call, a new window will open, and both parties will be able to talk once the far end has answered.

If just sending an IM to another VGo PC App user, a new window will open where you can type and receive your instant messages. A time stamp is not displayed, but if you hover over the received or sent message, a time bubble will be visible.

Answering a video call from another VGo PC App user or a VGo

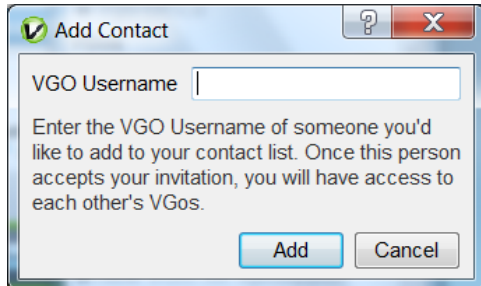
When someone calls your PC from their VGo PC App, your PC will ring and the video call window will open. If it is a video call, you will see yourself until you click the **Answer** button. If it is an audio only call, the window will not have any video displayed.

If the VGo PC App is open but not the active window then, the video window will remain in the background and just the VGo PC App icon will flash in your tray at the bottom of your screen.

- To answer the call – click on the green **ANSWER** button
 - Note – if your PC's speakers are muted or volume level turned down very low or if your ringtone setting is OFF, you may not hear a ring.

Adding a Contact to your list

- At the bottom of your VGo / Contact list, click on **Add**.




- Enter the username of the person you want to add. If you want to add a VGo, you'll need to enter the username of the manager of that VGo.
- A message will be sent to that contact and they must accept your request for them to be available in your contact list. Until they accept, their presence ball will remain grey colored even if they are on-line. When a manager of a VGo(s), accepts your request, all VGo's that they manage will appear in your VGo/Contact list.

Making your VGo talk



Talking VGo - A demonstration of VGo's ability to talk using its own synthesized voice is available when you are visiting with VGo. You type a string of words and VGo will speak them.

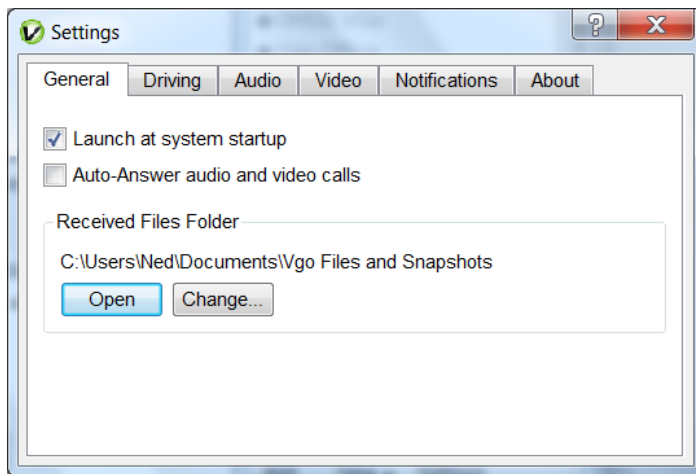
- Click on the Talking icon,  ("Toggle Text Chat") in the lower right area of your video window.
- A white text box will expand under the video window with an active text cursor flashing on the left side.
- Up to 200 characters can be typed in the box. Press **ENTER** and the VGo will immediately say the message. Even though you are remote, you will softly hear the VGo speak your message.

Changing settings in your VGo PC App

To open the settings window:

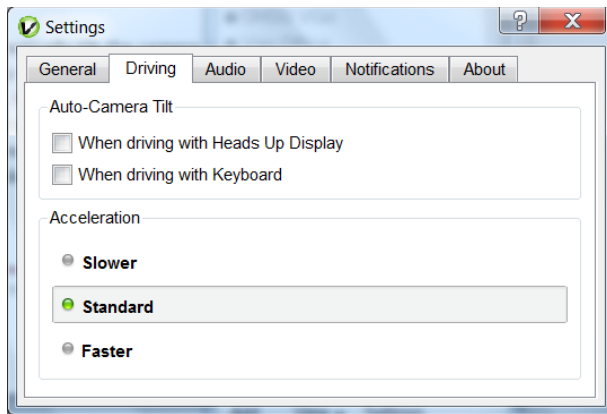
- Click on **SETTINGS** on your VGo PC App (located at the bottom).

General Settings



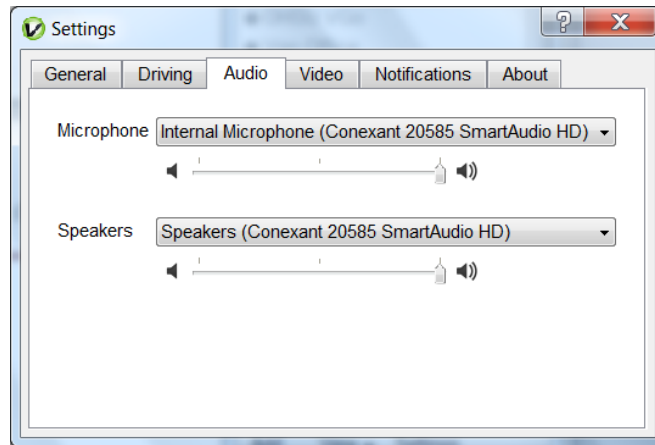
- Start-up Settings:
 - To launch the VGo PC App when your computer starts, check the "Launch" box.
 - To auto-answer video calls that come into your PC from another user, check the corresponding box.
- Received files folder
 - Select **Open** to open the folder where files and snapshots are stored.
 - Select **Change** to designate where files and snapshots will be stored on your PC.

Driving Settings



- Auto Camera Tilt
 - **Auto Camera Tilt** enables VGo to automatically tilt the camera as you drive (driving slower makes the camera tilt to the ground directly in front of it, and driving faster makes the camera tilt up, to see what is ahead).
 - To have the camera tilt automatically while driving with the “Head’s Up Display,” check the corresponding box.
 - To have the camera tilt while driving with the keyboard, check the corresponding box.
 - Note: When driving in **REVERSE**, the auto-camera tilt is not enabled. You must tilt the camera manually.
- Acceleration
 - You can select one of three settings for the rate of acceleration. First time users might prefer to have VGo accelerate “**Slower**”. Experienced users will want to select “**Faster**”.

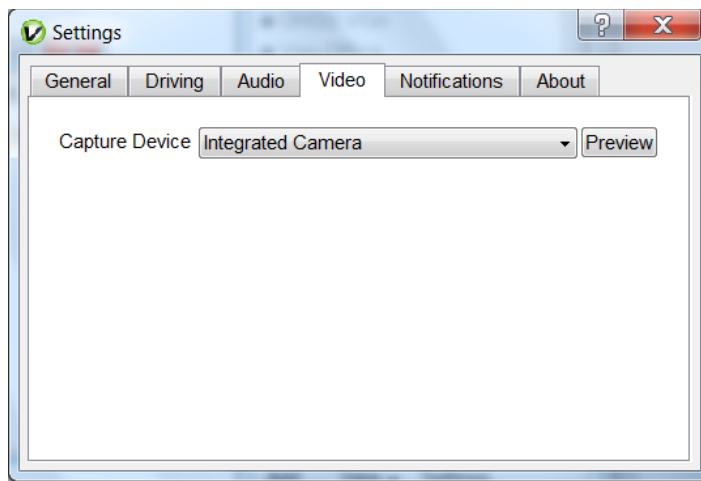
Audio Settings



- Microphone
 - This is where you select the microphone that is used by the VGo PC App.
 - If there is just one microphone, the VGo PC App will select it for you.
 - Many computers have a built-in microphone. In the instance that you have an external microphone plugged in, you will need to specify which of those you want to use for audio input.
 - The slider enables you to set the microphone loudness level
 - Normally, you shouldn't have to change the loudness level
 - Note: some operating systems may change this setting for you automatically

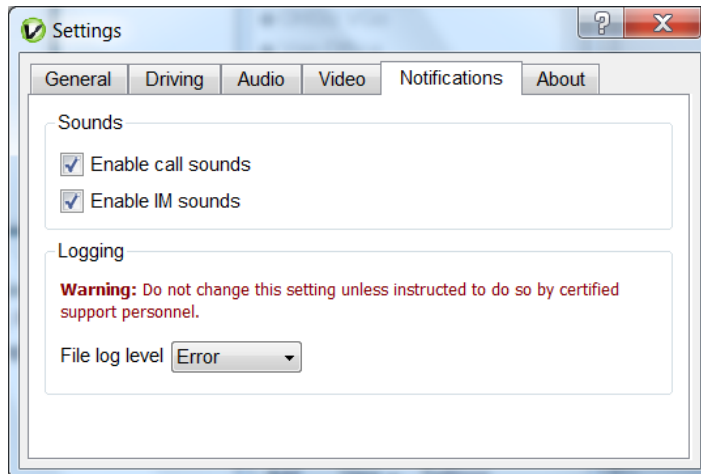
- Speakers
 - Enables you to select the speaker source used by the VGo PC App.
 - If there is just one set of speakers available, the VGo PC App will select it for you.
 - Many computers have built in speakers. In the instance you have external speakers plugged in, you will need to specify which of those you want to use for the audio output.
 - The slider enables you to set the default speaker loudness level
 - Normally, you shouldn't have to change the loudness level
 - Note: some operating systems may change this setting for you automatically

Video Settings



- Capture Device
 - Identifies the camera that is used by the VGo PC App
- Preview
 - Turns on the camera and displays the image it sees in a window. This enables you to see that the camera is working properly.

Notifications Settings



- Sounds
 - Enable call ringtones – turns incoming call ringing on and off
 - Enable IM sounds – turns incoming IM sounds on and off
- Logging – These settings are not to be changed unless instructed to do so by a certified support engineer.

About tab



- This is where you will find the software version number for your VGo PC App

Operating the VGo locally

Although VGo's are intended to be operated remotely, there are some functions that can be performed locally.

The VGo is intended to be left on at all times – that way someone can visit any time, even if they are somewhere else. The VGo can be carried without turning it off. For example, you can carry it for use on another floor or building within your facility.

Incoming visitors will be connected automatically (unless you prefer to manually permit a person to enter your facility – see **SETTINGS** below).

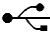
What the different lights mean

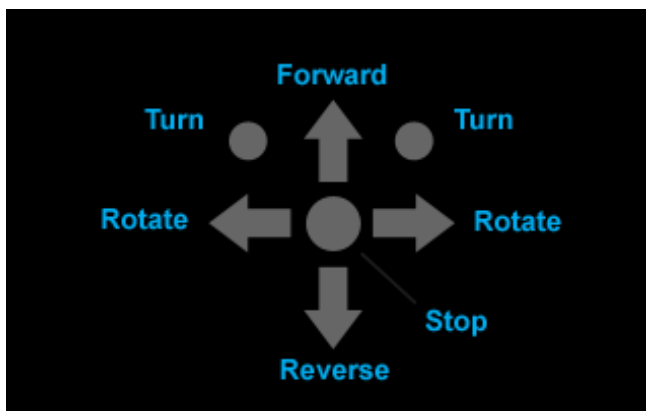
- Lights surround the LCD display
 - Flashing green and red lights – a remote person is about to arrive
 - Steady green lights – a remote person is presently visiting
 - Steady red lights (surrounding the LCD display) – your VGo is in use and you have **Muted** your audio and video. The remote person cannot see or hear you, but you can hear and see them.
 - Flashing orange/green – the VGo is connecting to a new Access Point (Roaming)
 - Steady orange – the VGo is updating or restarting
- White base headlight clusters – are always turned on when a remote person is visiting.

Using the VGo's Handheld Remote Control



- The **MENU** key always displays the Home menu.
 - The **MENU** key does not function when the VGo is in use by a remote visitor.
- **MUTE** stops the transmission of your audio and video to the far end to give privacy to people who are with the VGo. The lights surrounding the LCD will turn red and the camera will turn off and tilt down automatically. Press it again to re-start the transmission of audio and video. It has no effect when VGo is not in use.
- The **ARROW KEYS** are used for menu navigation.
 - They can also be used to drive locally
 - When not in use, after the **DRIVE** key has been pressed
 - When in use, they are always active for driving
- The center **OK** button is used to select a menu item.

- The **BACK** key will move back to the previous selection or screen. The **BACK** key is not available when a remote person is visiting.
- **VOLUME** keys adjust the system volume. This includes the loudness of the arriving visitor announcement and ring as well as the loudness of visiting person's voice.
- The **Answer/Call** key is used to manually admit an incoming visitor as well as initiate a connection to a remote user at their PC or to another VGo.
- The **HANG-UP** key is used to terminate an existing connection or reject an incoming visitor.
- The **TILT** keys move the camera position up and down.
- The **SWAP VIEW** toggles the live video on the display between the far end view and the local VGo view. **SWAP VIEW** enables the person who is with the VGo locally to see what the far end person is seeing.
- The **SNAPSHOT** button will capture the currently displayed video image and save it to a file on a USB flash drive.
 - The flash drive must be in the USB slot labeled  2 (right hand USB slot as viewed from the back) on the back of the LCD display.
 - On the USB drive, Snapshots are stored in a folder titled **images**. VGo will create this folder if it doesn't exist.
 - The file format **IMG_xxxx.jpg**.
 - Use **SWAP VIEW** to toggle between local and far end views.
- The **DRIVE** key currently enables and disables local driving of the VGo when not connected to a remote user. The LCD will continuously display a diagram of the keys on the handheld remote control that are available to drive the VGo.



It is recommended that the user place the VGo in an open space as they learn how to drive with the handheld remote control.


-
- Press and hold any of the keys above to drive the VGo.
NOTE: The VGo will typically continue to move for 1 to 2 feet after the key is released.
 - To immediately stop the VGo, press the center **OK** key.
 - The round **Turn** buttons move the VGo forward while simultaneously turning to the left or right.
 - The **Rotate** and **Reverse** functions operate at half the speed of the **Forward** and **Turn** keys.
- The **DOCK** key tells the VGo to automatically position itself on a charge dock. Note that the charging dock must be “seen” by the VGo. Drive or place the VGo facing the front of the charge dock, within about ten feet.

The VGo LCD Display and Menus

When your VGo is not in use, or it hasn't been used for about five minutes, the LCD will display a screen saver such as the date and time, or a series of photos or it will be turned off. To get to the previous screen, just touch any of the touchpad keys or press any key on the handheld remote control.

The main **Menu** is very simple. User selectable menus and choices can be accessed using either the lighted blue touch pad on the VGo or by using the handheld remote control.

In the upper left is an icon (a series of vertical bars) that will always display your **WIRELESS SIGNAL STRENGTH**.

Beside the signal strength icon you will see the Network Icon  which indicates active WiFi and internet connectivity. If either the WiFi or Internet connection is not active you will see **OFFLINE**.

In the upper right is an icon that will always display your **BATTERY STRENGTH**. If you see a single red bar, the VGo's battery is very low and the VGo should be docked or plugged into the wall charger immediately. If you see a lightning bolt, then the VGo is receiving external power to charge the battery – either through the charge dock or with the power cord plugged directly into the back of the VGo.

The menu items across the center of the screen are user selectable. Make your selection by touching the left or right **ARROW KEYS** to highlight the function you want to select (**Contacts**, **Events**, **Goodies** or **Settings**) and then touch the center **OK** button.

Contacts

Contacts is a list people or locations that can access the VGo. You can also initiate a connection to those contacts using the VGo.

- Use **UP/DOWN ARROW KEYS** to highlight a contact, touch the center **OK** button to select.
- A list of available locations for that contact will be displayed.
- Use **UP/DOWN ARROW KEYS** to highlight a location, touch the corresponding **FUNCTION KEY** associated with **CALL** for a video call.
 - Note: only sites that have a green presence indicator (to the left of the location name) can be called. If the presence indicator is red or grey or not there – that site is unavailable.

Note: other VGo's are listed under the contact name of the person who is managing that VGo.

Events

Events is a list of previous VGo activity.

On the left side of the screen is an icon that indicates the type of activity:

- A green circle with an arrow pointing to the right indicates a visitor who used the VGo
- A green circle with an arrow pointing to the left indicates that the VGo was used to make an outbound call.
- A red circle with a dash indicates that visitor attempted to use the VGo but was not admitted.

Beside the icon is the name of the person or VGo in that event.

On the right side of the screen is an indicator of when the event happened.

More details can be viewed by moving the highlight to the desired event and touching the center **OK** button.

Goodies

Goodies are some fun things you can select when not in a call. Items may also be designated to be displayed while in screensaver mode when VGo is not in use.


- Use the **UP /DOWN ARROW KEYS** to highlight a **Goodie**, touch the center **OK** button to select. Touching any key will stop the Goodie and take you back to the menu.
- Note: if you select the digital clock, see the section on **User Settings**
- Note: if you want to view your own photos in the slide show, see the section on **User Settings**

VGo Settings

Settings are a set of screens that details information about your VGo. This is also where you can set specific VGo behavior particularly with respect to your privacy. Most settings are changed by toggling using the center **OK** button. Other settings are changed by touching the left or right **ARROW KEYS**.

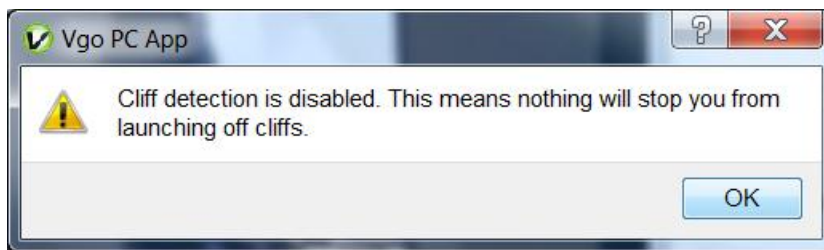
User Settings

Under **User Settings**, you can:

- Block people from using the VGo:
 - **Availability** – sets **Do Not Disturb** on or off. The default setting is **Available** – so others can use the VGo. When set to **Do Not Disturb**, it shows the VGo's presence to others as busy (red ball), so they cannot visit.
- Disable auto answer:
 - **Auto Answer** – turns auto answer on or off. The default is set to **ON**. When this setting is set to **OFF**, an incoming visitor is indicated by lights flashing and the VGo announcing the identity of the visitor. The visitor must be admitted manually by touching the blue button under Answer on the VGo touchpad or by using the handheld remote control.
- Change what is shown on the screen after a period of inactivity:
 - **Screen Saver** – Touch **OK** to change the selection
 - **Digital Clock** – Displays the current time. The time is set for you automatically by the network. You may have to set your **Timezone** (see below).
 - **Slideshow** – Displays a new picture every 5 seconds. You can over-ride the default images and show your own pictures.
 - Pictures must be in the **.jpg** file format
 - Picture files must be in a folder titled **images** on a USB flash drive.
 - The flash drive must be in the USB slot labeled  **2** on the back of the LCD display.
 - **Screen Blank** - Turns off the LCD display until any of the touch buttons is touched. This can save power when the VGo is not in use and not on the charge dock.
- Change the screen saver wait time:
 - **Screen Saver Wait (min)** – changes the amount of time before the Screen Saver is activated. Use the **left and right blue arrow keys** to change the wait time in minutes.
- Select the **Timezone** for the VGo's location:
 - Touch **OK** to cycle through and display your current time zone. US and Canadian time zones are available.

Advanced Settings

- Most of these settings are for support personnel only. Do not change these settings unless instructed to do so.
- The **Cliff Detection** setting may be set to **OFF** if the type of flooring, where VGo is being used, triggers false warnings.
 - **Cliff Detection** prevents the remote user from driving the VGo over a drop-off such as a stair or ledge. Sometimes these sensors can be fooled by a very dark floor material – it thinks that it is looking down over a drop off and will not let the remote driver move forward. The remote user can temporarily override the setting using a control on their VGo PC App.
 - If the entire area where VGo is driven is covered in black floor tile or carpet, then it makes sense to disable **Cliff Detection** provided the remote user cannot accidentally drive over a drop off that may damage the VGo.
 - When **Cliff Detection** is set to **OFF**, users will see a popup message letting them know that they are not protected. Users can temporarily turn Cliff Detection **ON** for the duration of that visit by clicking on the **Controls** button on their VGo PC App and changing the setting.



System Information

- This information is for your system administrator. It includes:
 - The VGo's serial number (also found on the back of the LCD display)
 - MAC Address – the MAC address for this VGo
 - Wireless Network – the name (SSID) of the wireless network currently used by this VGo
 - IP Address – the IP address in use by this VGo
 - Device Nickname – the Nickname assigned by the person managing this VGo. This is the name that remote users will see in their contact list in their VGo PC App unless they have renamed it in their personal contact list.
 - Domain – the name of the domain used by VGoNet

Version Information

- This information is primarily for your VGo support representative.
- **Software version number** - You may be asked for the version number of the **Application** software that is currently loaded into the VGo. This user guide reflects Application version 1.4.0.
- **Check for Updates** – Periodically, software updates will be available for download. Usually you will see a message asking if you would like to receive the update. You can check to see if an update is available by highlighting **Check for Updates** and touching the **OK** key.

Network Settings

- This is where you go to change WiFi networks and any settings for a particular WiFi network.
- **WiFi Networks** – select this menu choice and the system will scan for available networks. The network to which VGo is currently connected will have a large blue ball beside its name. Other networks that have been setup but not currently being used will have a purple ring beside their name.
 - To connect to a different WiFi network, just highlight the network name and select it and then follow the prompts. See the section **Setting up the VGo** for more details.
 - To connect to a network with a hidden SSID, select **Add** and then follow the prompts.
- **IPv4 Settings** will have the values that were previously entered if your network requires a Static IP address. Any of these values can be modified here or you can re-select a network and change the values as part of the setup process, just as you did the first time you went through the setup process.
- **WiFi Roaming and Scanning**

Your VGo arrives from the factory set to always stay connected to the same WiFi access point. This prevents your VGo from trying to scan for new access points that may not exist, but of course limits the driving range of the VGo to within the broadcast range of the access point. If your WiFi network is comprised of multiple access points, then you'll want to have VGo automatically sense when the network is getting weak and then switch to the next access point as you are driving from one place to another.

In the wireless world this feature is called Roaming (no - your VGo will not roam about on its own, VGo only moves when you drive it).

To turn Roaming On

- First, check with your IT manager to find out what frequency is being used for the WiFi specific network that VGo is connected to. The choices are:
 - 2.4 GHz
 - 5.0 Ghz
 - Both
- From the **Main Menu**, move the highlight using the **blue left and right arrow keys** to **Settings** and touch the center **OK** button.
- Highlight **Network Settings** and touch **OK**.
- Highlight **WiFi Roaming and Scanning** and touch **OK**.
- Highlight **Roaming**. If it says **Off**, then touch **OK** to toggle Roaming to **ON**.
- Highlight **Scan Frequency** and touch **OK** to toggle to the correct setting.

With Roaming **ON**, when the VGo determines that it needs to switch to the next WiFi access point it will automatically stop moving and display the message “Searching for Network, Please Wait”, scan for an access point with a stronger signal and then switch to that access point. The switch to the next access point will take about 3 seconds at which time your audio, video and driving is restored.

If you are at the edge of the range of your WiFi network, and no stronger access points are available, VGo will re-connect to its current access point and then scan again after about 20 seconds. If you see VGo “Searching for Network” more than once within about 30 seconds, you should assume that you have reached the outside range of the WiFi network and go back 10 or 15 feet to remain in good WiFi operating range.

If you continue to move further out of range, the message “**Your WiFi Signal is Low**” will be displayed and you should not drive further or you may lose remote control of your VGo.

To turn Roaming Off

- From the **Main Menu**, move the highlight using the **blue left and right arrow keys** to **Settings** and touch the center **OK** button.
- Highlight **Network Settings** and touch **OK**.
- Highlight **WiFi Roaming and Scanning** and touch **OK**.
- Highlight **Roaming**. If it says **ON**, then touch **OK** to toggle Roaming to **OFF**.

Muting your audio and video on your VGo

MUTE stops the transmission of your audio and video to the remote user to give privacy to people who are with the VGo. When the VGo is muted, the remote user cannot see or hear anything from the VGo. People who are in the presence of the VGo will still be able to see and hear the remote user.

- To **Mute** – Touch any button on the blue button touchpad to display hidden status information and controls. They will appear at the top and bottom of the LCD. Touch the blue button under **Mute**. You can also just press the red **Mute** key on your handheld remote control.
 - Your LED lights around the LCD display will turn from green to red
 - The far end will not be able to hear or see you
 - The far end will see a message on their screen notifying them that you have muted
- To **UnMute** – Touch or Press the **Mute** button again.
 - Your LED lights will turn from red to green
 - The far end can hear and see you again

Admitting Visitors Manually

- Your VGo is set to automatically be available (auto-answer) for incoming visitors.
- If you have changed the **SETTINGS** to manually admit incoming visitors, the visitor will not be admitted until you tell the VGo to answer, much in the same way that you answer the door in your home when someone knocks. If you don't answer the door, no one comes in.
- Look at the display to see who is requesting to visit.
 - Using the blue touchpad, touch the button under **Answer**. When using the handheld remote control, press the **ANSWER** button.
 - If you don't want to admit the visitor, using the blue touchpad, touch the button under **Ignore**. When using the handheld remote control, press **Hang-up**.
 - You can also do nothing, in which case the lights will continue to flash until the person attempting to visit goes away.

Using your VGo to call out

- From the **Home** menu, use the **LEFT/RIGHT ARROW KEYS** to highlight **CONTACTS** and touch **OK** to select.
- Use **UP/DOWN ARROW KEYS** to highlight a contact, touch the center **OK** button to select.
- A list of available locations for that contact will be displayed.
- Use **UP/DOWN ARROW KEYS** to highlight a location, touch the corresponding blue button for **CALL**.

Note: only sites/contacts that have a green presence indicator (to the right of the name) can be called. If the presence indicator is red or grey— that site/contact is unavailable.

Re-charging the battery

If you see a red line on the battery strength indicator, the VGo must be recharged.

Using the charge dock:

- Position the VGo so it is facing the front of the charge dock, within one to ten feet. Touch the blue **Dock** button on the Main Menu or press the **Dock** button on the handheld remote control. Once the VGo is successfully docked, the battery charge level

icon on the VGo will change to look like this:



- The VGo can also be docked by the remote user – see the section on *Using the VGo PC App*.

If the charge dock is not available:

- Plug the AC wall charger into the back of the VGo (just below the Power button). Note that the VGo will not drive when the powercord is plugged into the VGo directly.

In general, we recommend that your VGo be on the charge dock before retiring for the night.

Charge Dock placement

The charge dock should be placed where it is convenient for a remote user to drive and out of the way of people and moving equipment in the facility where VGo is used. You don't want the VGo to be in a place where someone could bump into it accidentally since it could come off its charge dock and the battery eventually will drain completely.

If the facility is large, consider adding charge docks so one is never far away when a person is done visiting using VGo.

Placement requirements:

- Power source within reach of the Charge dock power cord (6 ft).
- A solid wall or cabinet to brace the dock from moving backward when VGo docks itself
Note: the back of the charge dock has mounting screw holes which can be employed to guarantee no movement of the charge dock will occur when docking or by people passing by, etc.
- One foot clear space to either side of the charge dock for the VGo to maneuver.
- At least 48" of clear space above the dock (no low overhanging shelves) so the VGo has room to back onto the dock.
- No highly reflective materials nearby (mirrors, shiny metal cabinets, windows, etc) so the VGo sensors can operate efficiently.

Getting VGo Serviced

Contact your reseller for help with installation, operation, problems and repairs.

You can also consult the Support section on vgocom.com

Also available from your reseller are accessories and replacement parts including:

- Replacement and large capacity (12 hr) batteries
- Hand held remote controls
- Charge docks

Appendix 1 – Configuring EAP Authentication (802.1X) for WiFi connectivity

Before configuring the VGo, you must have your EAP authentication certificate(s) (files) loaded on a USB drive (if required). You might have one file that has the entire certificate verification chain or there could be two files (client certificate and authentication chain). The file(s) must be in the **PEM** format. The file(s) can be in any folder on the USB drive.

- Insert the USB drive into the **USB port #2** located on the back of the LCD display of the VGo.
- From the **Main Menu** select **Settings**
 - If you are not at the **Main Menu**, select **Back** repeatedly until the **Main Menu** is displayed or press the **Menu** button on the hand held remote.
- Select **Network Settings**
- Select **WiFi Networks**
- Select the required WiFi network from the list
 - If the WiFi network you require is “hidden”, select **Add Hidden**, enter the SSID. On the next screen select the Authentication as **WPA-Enterprise** or **WPA2-Enterprise**
- Select the **EAP Method**. Methods supported are **TLS, LEAP, PEAP** or **TTLS**.
- Depending on the Method selected, you will be prompted for one or more of the following items. Continue through all the screens.
 - On the **Client Certificate** screen (**TLS** only), browse the folders/files list (of the USB drive) and select the client certificate file.
 - On the **CA Certificate** screen (**TLS, PEAP, or TTLS**), browse the folders/files list (of the USB drive) and select the CA certificate file containing the authentication chain.
 - Note: this step will be skipped if the authentication chain is included in the client certificate file.
 - You may also be asked if a CA Certificate is required (**PEAP, MS ChapV2**)
 - On the **Identity** screen (**TLS, LEAP, PEAP, or TTLS**), you will be prompted to enter the Identity associated with the certificate. By default, this entry will be filled in using the subject information from the client certificate. If this is incorrect, go

-
- to **BackSpace** to delete the characters and then enter the correct Identity – then select **Accept**.
- On the **Key PassPhrase** screen (**TLS, LEAP, PEAP, or TTLS**), enter the Key passphrase associated with the client certificate or identity.
 - On the **PEAP Version** screen (**PEAP** only), choose **0** or **1**.
 - On the **PEAP Label** screen (**PEAP** only), choose **Client EAP Encryption** or **Client PEAP Encryption**.
 - On the **Secondary EAP Method** screen (**PEAP, TTLS**), choose **MD5** or **MS-Chapv2**
 - On the **IP Addressing** screen, select the connection type. Most wireless networks use **DHCP**. If your network administrator requires a **Static IP** address, you'll need the following additional information:
 - **IP Address**
 - **Sub Netmask**
 - **Default Gateway**
 - **DNS Nameserver**
 - The VGo will then connect to the network – this may take a minute or two – you will see **Please Wait . . . Connecting to . . .** A green check mark will appear on the screen when the connection is successful.
 - If you are setting up the VGo for the first time, the VGo will then display a new screen that says “**Now we need to authenticate your VGo**”. Leave your VGo at that screen and go to the section of this document titled: *Step 3 – Creating a VGo account and downloading the VGo PC App*.
 - Note: If you get an error message, the problem could be with either the VGo's connection to the WiFi or the WiFi connection to the internet. Both must be working for the VGo to be authenticated.